

# Big Travail 21

(Building only for Ladies)

**Address : Sakai2-17-9 Musashino-shi Tokyo Japan**



## 《Nearest station》

**JR Chuo line Musashisakai station about 5mins on foot**

## 《To other stations》

**Tokyo station – Musashisakai station about 34mins,**

**Shibuya station – Musashisakai station about 29mins,**

**Shinjuku station – Musashisakai station about 19mins**

## Musashisakai station



**《Build》 2Floors  
《Private room》Western – style room 6tatami mats**



**Room facilities : TV, Fridge, Closet, Bed frame, Free internet line, Curtain**



**Coin operation A/C and Heating  
(¥100/3hours)**



**Internet line**



**Coin operation box**



**(¥100/5hours)**

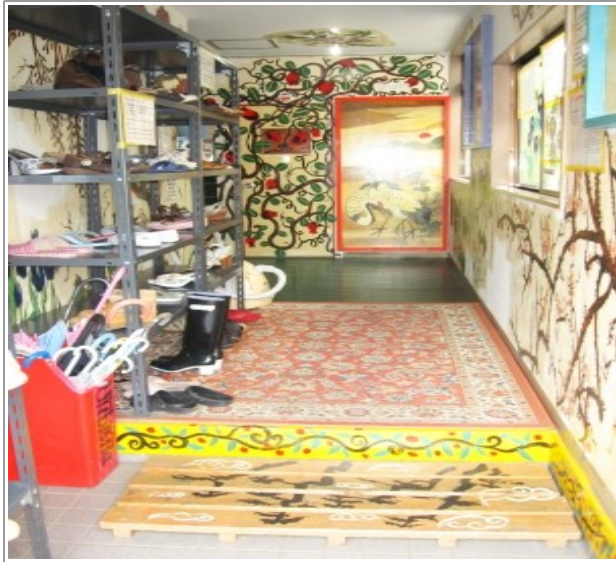
**【Price】** Up to 3people can be contracted to stay in a room.  
**Rent : Foreigner Price ¥49,500/month**  
**Utilities : ¥6,900/month/person**  
**※Facility Deposit : ¥20,000/person**  
**※It will be refunded to you as long as the term contract is fulfilled and there is no damage done to your room.**



## Entrance



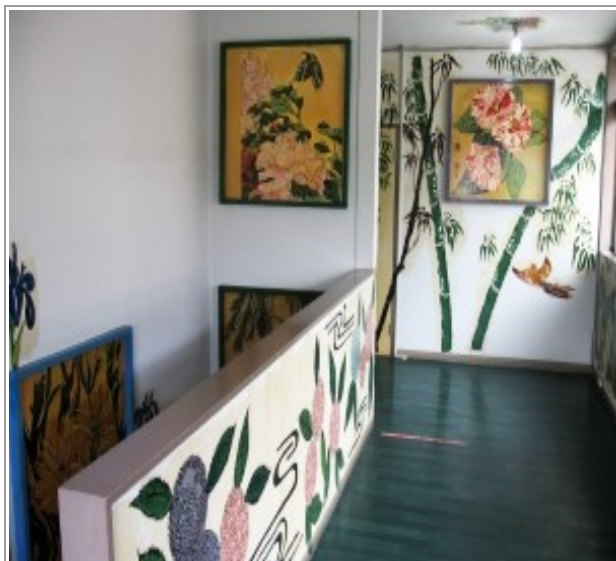
## Shoe shelf



## Mail box



## 2F Hallway



## Guest box



## Lounge



## Kitchen



**Kitchen Facilities : Cooking stove, Microwave, Toaster, Rice cooker, Dishes, Rubbish bins...**



## Shower room



## Toilet



## Hallway



## Laundry space

**Washing machine  
(¥200/time)**



**Deyer  
(¥100/40mins)**



**Public vacuum cleaner**



**Public iron**



**Pay phone  
(Only for domestic)**



**Bicycle parking**



## **1. Inicial Cost**

- A. Rent : Foreigner Price ¥46,800/month (Up to 3people can be contracted to stay in a room.)
- B. Utilities : ¥6,900/30night/person (¥230/night/person)
- C. \*Facility Deposit ¥20,000/person (One time fee applied during your check-in as security for facilities in the room.)
  - \*It will be refunded to you as long as the term contract is fulfilled and there is no damage done to your room. Facility deposit is not refundable in the case of cancellation of the contract applied for te remainder of term which you have not yet paid.

## **2. Facilities**

- A. Private room
  - \*6tatami mats, Western-style room
  - \*TV, Fridge, Coin operation A/C and Heating (¥100/5hours) , Light, Closet, Free internet line, Curtain, Single size bed frame, Rubbish Bin
- B. Public area
  - \*Kitchen (Dishes, Microwave, Toaster, Rice cooker, Cooking stove, Cooking tools and so on.)
  - \*Lounge (TV, A/C, Iron)
  - \*Shower room (Avalable time : between 7AM and 2PM)
  - \*Toilet / Rest room
  - \*Coin operation laundry (Washing machine¥200/time, Dryer¥100/40mins)

## **3. Reservation**

A reservation is made by putting a down payment of ¥10,000/room.  
This ¥10,000 is part of your first months rent. You can pay in cash or by bank transfer.  
The downpayment is not refundable in case of cancellation.

## **4. Viewing the Guest Houses**

Before you making a reservation, viewing guest houses in also available.  
Please make an appointment before you come.

## **5. Check-in Procedure**

Check-in procedure is available at the office in Higashi koganei station (JR Chuo line) between 10AM and 3PM everyday. Excluding Wednesday. It takes about an hour to an hour and a half to explain about all the rules and systems, take a copy of your passport, settle payment, give you a room key, and so on.  
Pick-up service is available for those who come to the office for the check-in procedure.  
Please call from North exit of Higashi koganei station

2010. April.

Big World co. ltd  
Person in charge : Hana Tenko

〒184-0002  
Kajino-cho 4-11-6 Koganei-shi Tokyo Japan  
TEL: (+81) 0422-51-2277  
FAX: 0422-51-4499  
E-Mail: [info@guesthouse.co.jp](mailto:info@guesthouse.co.jp)  
[www.guesthouse.co.jp](http://www.guesthouse.co.jp)  
[www.bigworld.co.jp](http://www.bigworld.co.jp)